

Kansas City Orthopaedic Institute Community Health Needs Assessment Implementation Plan

2022

◆ Kansas City Orthopaedic Institute



Kansas City Orthopaedic Institute CHNA Implementation Strategy

Adopted by the Kansas City Orthopaedic Institute, LLC Board of Managers on September 13, 2022

This implementation strategy describes how Kansas City Orthopaedic Institute (KCOI or the hospital) plans to address significant needs described in the Community Health Needs Assessment (CHNA) published by the hospital on September 13, 2022. See the CHNA report at [Community Health Needs Assessments | Orthopaedics Near Overland Park \(kcoi.com\)](https://www.kcoi.com/Community-Health-Needs-Assessments-Orthopaedics-Near-Overland-Park). KCOI plans to implement the initiatives described herein during calendar years 2023 through 2025.

Conducting the CHNA and developing this implementation strategy were undertaken by the hospital to assess and address significant health needs in the community served by KCOI, and in accordance with Internal Revenue Service regulations in Section 501(r) of the Internal Revenue Code.

This implementation strategy addresses the significant community health needs described in the CHNA report. This document identifies the significant needs the hospital plans to address through various strategic initiatives and also explains why the hospital does not intend to address certain other significant needs identified in the CHNA report.

This document contains the following information:

1. About KCOI
2. Definition of the Community Assessed by KCOI
3. Summary of Significant Community Health Needs
4. Implementation Strategy to Address Significant Health Needs
5. Significant Community Health Needs KCOI Will Not Address
6. Adoption of the Implementation Strategy by KCOI's Authorized Body

1. About KCOI

Kansas City Orthopaedic Institute (KCOI or “the hospital”) conducted this Community Health Needs Assessment (CHNA) to identify significant community health needs and to inform development of an Implementation Strategy to address current needs.

Recognizing an unmet need in the region for a hospital dedicated exclusively to orthopedics, in 1998 several of Kansas City’s leading orthopedic surgeons came together with Saint Luke’s Health System (SLHS) to create KCOI. KCOI operates as a joint venture between SLHS and physicians. The hospital provides an array of orthopedics services including: outpatient surgery, inpatient surgery (e.g., total joint replacement surgery and spine surgery), rehabilitation services, urgent care services, Magnetic Resonance Imaging (MRI) services, and others. Additional information about Kansas City Orthopaedic Institute is available at: <https://www.kcoi.com/about-our-hospital/>.

Saint Luke's Health System is a faith-based, not-for-profit health system committed to the highest levels of excellence in providing health care and health-related services in a caring environment. The system is dedicated to enhancing the physical, mental, and spiritual health of the diverse communities it serves. Saint Luke's Health System includes sixteen hospitals and campuses across the Kansas City region, home care and hospice, behavioral health care, dozens of physician practices, a life care senior living community, and additional facilities and services. Additional information is available at: <https://www.saintlukeskc.org/about-saint-lukes>.

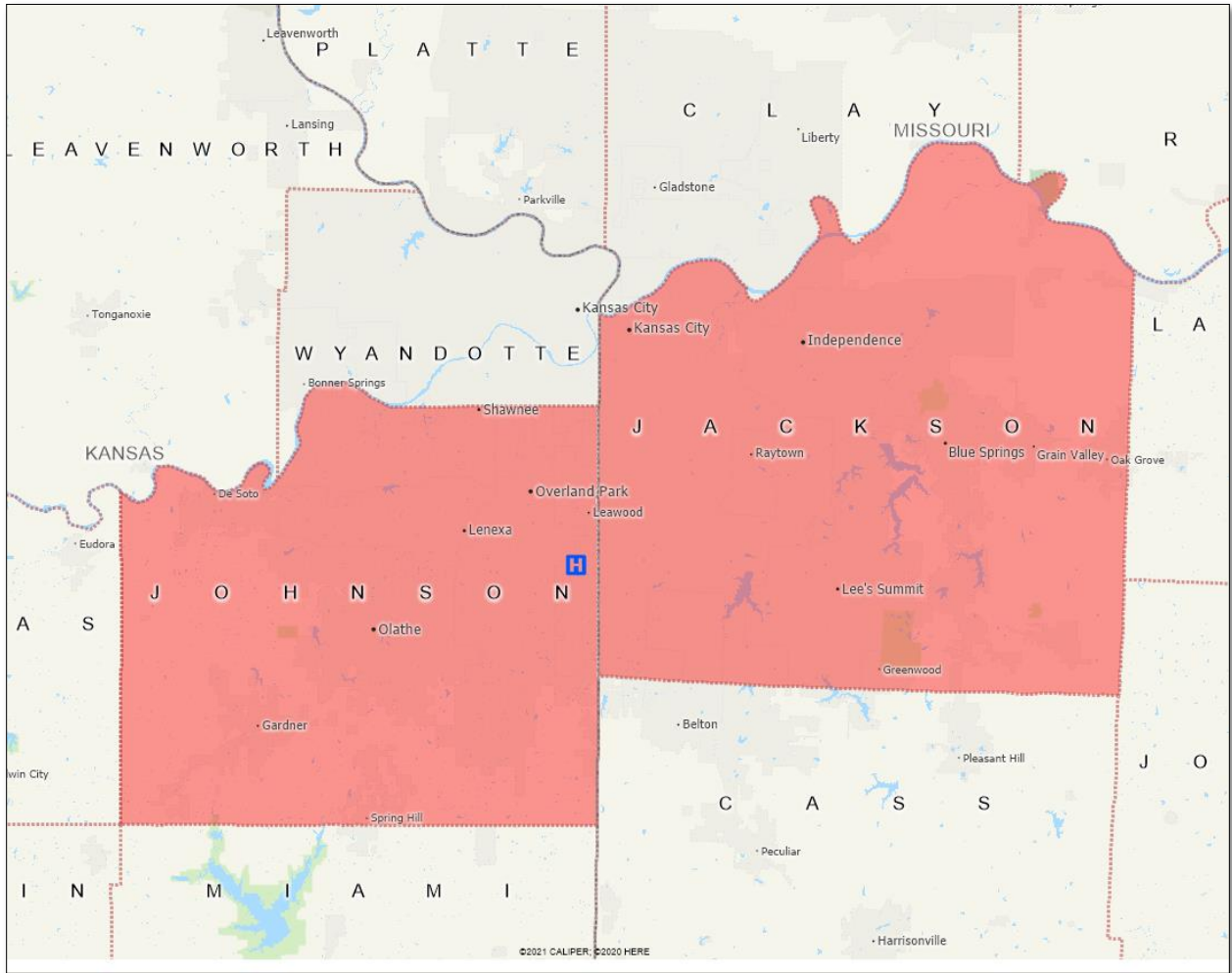
2. Definition of the Community Assessed by KCOI

For purposes of this CHNA, KCOI's community is defined as a two-county area that includes Jackson County, Missouri and Johnson County, Kansas. In calendar year 2021, these two counties accounted for approximately 67 percent of the hospital's inpatient volumes and 77 percent of outpatient visits.

The total population of the two counties in 2020 was approximately 1,298,300 (700,700 persons in Jackson County and 597,600 persons Johnson County).

The following map portrays the community assessed by KCOI and the location of the KCOI campus.

Map of Kansas City Orthopaedic Institute's Community



Source: Caliper Maptitude, 2021.

3. Summary of Significant Community Health Needs

As determined by analyses of quantitative and qualitative data, an overarching focus on advancing racial and ethnic health equity emerged, recognizing that racism has yielded measurable health disparities. Reconciling the impacts of racism in healthcare has the best potential to improve community health. Within this context, significant health needs in the community served by Kansas City Orthopaedic Institute are:

- Access to Care
- Mental Health
- Needs of Growing Older Adult Population
- Nutrition, Physical Activity, and Obesity
- Poverty and Social Determinants of Health

The CHNA report for KCOI describes each of the above community health needs and why they were determined to be significant.

4. Implementation Strategy to Address Significant Health Needs

This implementation strategy describes how KCOI plans to address the significant community health needs identified in the 2022 CHNA report. KCOI and SLHS staff reviewed findings in that report and identified significant community health needs that the hospital intends and does not intend to address during calendar years 2023 through 2025.

As part of that decision-making process, the staff considered criteria such as:

- Whether the need is being addressed by other organizations;
- The extent to which the hospital has expertise or competencies to address the need;
- The availability of resources and evidence-based interventions needed to address the need effectively;
- The frequency with which stakeholders identified the need as a significant priority; and
- The potential for collaborations with other community organizations to help address the issue.

By applying these types of criteria, KCOI determined that it will implement initiatives to address the following three significant health needs:

- Access to Care
- Mental Health
- Nutrition, Physical Activity, and Obesity

The following pages describe the actions KCOI intends to implement to address each of the above needs, including planned collaborations between the hospital and other organizations.

Access to Care

To address this need, KCOI will implement the following initiatives:

1. Continue to provide financial assistance (charity care) pursuant to the KCOI Financial Assistance Policy. Continue providing training so that KCOI staff are able to help eligible patients receive financial assistance.
2. In collaboration with SLHS, continue to advocate for Medicaid expansion in Kansas and for successful implementation of expansion in Missouri.
3. Continue to participate in the Wy/Jo Care Program, which improves access to specialty care for low-income and uninsured residents of Wyandotte and Johnson counties.
4. Continue to provide access to care through the urgent care clinic with extended appointment hours.
5. Provide community benefit grants to the following organizations to increase access to care (including the supply of providers) in the community: KC CARE Health Center,

Kansas City Hospice & Palliative Care, and the University of Missouri Kansas City Intern and Resident program.

Principal Collaborators. In implementing the above Access to Care initiatives, KCOI intends to collaborate with KC CARE Health Center, other SLHS entities (including hospitals and SLPG), the Missouri Hospital Association, the Kansas Hospital Association, the Medical Society of Johnson and Wyandotte Counties, and other organizations.

Mental Health

To address this need, KCOI will implement the following initiatives:

1. Continue screening urgent care and surgery patients for suicide risks, using the Patient Safety Screener (PSS-3) tool, and refer patients at risk to mental health resources.
2. Continue identifying patients who show signs of broken bones caused by domestic violence or abuse and referring them to appropriate resources.
3. Continue referring patients experiencing (or at risk of experiencing) domestic violence to SAFEHOME.
4. Provide staff and financial support for “Fighting Fentanyl” events in the community.

Principal Collaborators. In implementing the above Mental Health initiatives, KCOI intends to collaborate with other SLHS entities (including Crittenton), SAFEHOME, and other organizations.

Nutrition, Physical Activity, and Obesity

To address this need, KCOI will undertake the following program initiatives:

1. Continue strategies for optimizing patients for surgery such as incorporating nutrition and physical activity themes in preoperative education for patients.
2. Provide information on, and direct access to, Saint Luke’s Community Resources to connect patients to free and reduced cost resources (including healthy food options) in the community: <https://saintlukesresources.org/>.
3. Provide resources and education for residents of Johnson and Jackson counties regarding physical activity.

Principal Collaborators. In implementing the above Nutrition, Physical Activity, and Obesity initiatives, KCOI intends to collaborate with other SLHS entities (including hospitals and SLPG), and other organizations.

5. Needs KCOI Will Not Address

No hospital organization can address all of the health needs present in its community. KCOI is committed to serving the community by adhering to its mission, using its skills and capabilities, and remaining a strong organization so that it can continue to provide a wide range of community benefits.

KCOI does not intend to address two of the five significant community health needs identified through its 2022 CHNA, as follows.

Needs of Growing Senior Population. KCOI recognizes that significant growth is projected for the population aged 65 years and older. SLHS already offers a wide array of acute and continuing care services for this growing population and anticipates continuing to meet its health care needs. The staff charged with developing this implementation strategy concluded that based on the criteria described above, the hospital's implementation strategy should focus on other, higher priority types of community health needs.

Poverty and Social Determinants of Health. While the hospital's 2022 CHNA identified the Poverty and other Social Determinants of Health as significant community health needs, the staff charged with developing this implementation strategy identified three other needs as higher priorities for the 2023-2025 KCOI implementation strategy.

6. Implementation Strategy Adoption

The Kansas City Orthopaedic Institute, LLC Board of Managers reviewed and adopted this implementation strategy at its September 13, 2022 meeting.

◆ **Contact us**

Kansas City Orthopaedic Institute

3651 College Blvd.
Leawood, KS 6621

913-338-4100

saintlukeskc.org/locations/kansas-city-orthopaedic-institute



Download the **SaintLukesKC** app



Saint Luke's Health System shall not discriminate on the basis of race, color, national origin, gender, pregnancy status, sexual orientation, age, religion, disability, veteran status, gender identity or expression. *Saint Luke's Health System* cumple con las leyes federales de derechos civiles aplicables y no discrimina por motivos de raza, color, nacionalidad, edad, discapacidad o sexo. *Saint Luke's Health System* tuân thủ luật dân quyền hiện hành của Liên bang và không phân biệt đối xử dựa trên chủng tộc, màu da, nguồn gốc quốc gia, độ tuổi, khuyết tật, hoặc giới tính. *Saint Luke's Health System* 遵守適用的聯邦民權法律規定，不因種族、膚色、民族血統、年齡、殘障或性別而歧視任何人。